

Scottish Borders Child Poverty Index 2020

May 2021

E.R. Murray for Scottish Borders Council (experimental statistics)

Table of Contents

SB CPI: Purpose, Reason for Reboot and Scoring.....	2
Scottish Borders Child Poverty Index 2020 Scores.....	7
Comparing Scottish Borders Child Poverty Index 2020 to SIMD 2020	8
Scottish Borders Child Poverty Level Change Over Time and By Locality.....	10
Appendix 1: Scottish Borders Child Poverty Index 2020: Primary School Ranking	11
Appendix 2: Change in SB CPI Level by Locality	14
Berwickshire	14
Cheviot.....	14
Eildon	15
Teviot and Liddesdale	16
Tweeddale.....	16

SB CPI: Purpose, Reason for Reboot and Scoring

The purpose of the Scottish Borders Child Poverty Index (SB CPI) is to provide additional insight into Child Poverty in the Scottish Borders. This work has been triggered by the Scottish Government’s allocation of Pupil Equity Funding (PEF) and SBC’s Corporate Management Team’s view that allocation could be improved. The SB CPI was also created to work alongside the Scottish Index of Multiple Deprivation. SIMD provides a way of looking at deprivation in an area, covering the whole population and does not specifically reflect child poverty.

The SB CPI is a tool to help inform the Local Child Poverty Action Plan and which is a requirement of the Child Poverty Act (Scotland) 2017.

The SB CPI was first developed for 2017 and then updated for both 2018 and 2019. Then in 2020 the component sourced from HMRC “Children in Low Income Families” changed significantly meaning that a ‘reboot’ was required for 2020 including redoing the SB CPI results for 2017, 2018 and 2019. Additionally, in early 2020 the Scottish Government updated the Scottish Index of Multiple Deprivation (SIMD). This means that the SIMD2020 is a better comparison to SB CPI.

The index ‘reboot’ is based on data related to four components for area in the Scottish Borders. These components are:

- Children in Low Income Families (**CiLIF**) – Source is [DWP/HMRC](#).¹ Relative low-income is defined as a family whose equivalised income is below 60 per cent of contemporary median income. Gross income measure is Before Housing Costs (BHC) and includes contributions from earnings, state support and pensions. For the SB CPI uses the most recent available year’s data, currently there is an one year lag e.g for SB CPI 2020 uses the CiLIF data for 2019/20.
- Free School Meals (**FSM**) – Source is SBC. The proportion of pupils recorded for Free School Meals of all pupils in area for school year.
- Clothing Grant (**CLG**) - Source is SBC. The proportion of pupils recorded for Clothing Grant of all pupils in area for school year.
- Educational Maintenance Allowance (**EMA16+**) – Source is SBC. The proportion of pupils who are aged 16 or older (before 01 March of school year) who receive Educational Maintenance Allowance of those pupils in SBC School of all pupils aged 16 or older (before 01 March of school year).

The table below shows the results for Scottish Border for 2017 to 2020

SB CPI Components / Year	For SB CPI 2017	For SB CPI 2018	For SB CPI 2019	For SB CPI 2020
Children in Low Income Families - CiLIF (DWP) ^	19.8%	21.8%	20.6%	22.5%
Free School Meals - FSM (SBC)	10.0%	10.4%	11.6%	15.7%
Clothing Grant - CLG (SBC)	14.6%	15.1%	15.2%	18.1%
Educational Maintenance Allowance 16+ - EMA16+ (SBC) *	8.2%	6.2%	3.8%	16.0%

^ CiLIF: Data is one year lag ; e.g. for 2020 the DWP data is for 2019

* EMA16+: Pupils that are aged 16 before the 1st of March of the school year

The results for 2020 show some of the Covid-19 pandemic impact, with an increase in the proportion of pupils receiving free school meals, clothing grant and educational maintenance allowance. It is important to

¹ The calculation of proportion of Children in Low Income Families for the purpose of the Scottish Borders Child Poverty Index differs to ‘official statistics’ due to the availability of the data from Stat-Xplore. The children in Stat-Xplore are defined as dependent individuals aged under 16; or aged 16 to 19 in full-time non-advanced education or in unwaged government training. (Not just those aged under 16 – unable to group into age bands). The figure for all children is then expressed as proportion of those aged 0 to 15 as published by NRS. It is recognised that this calculation is imperfect, but practical for the purpose of the SB CPI.

note that the children in low income families relates to 2019/20, so the full impact of Covid-19 pandemic is not reflected in these figures; this will be reflected in the 2021 SB CPI.

The table below shows the score that an area will receive based on the result for each component. The SB CPI allows for an area to have a score ranging from 0 to 20, where 0 indicates no element of child poverty and 20 the highest levels of child poverty.

Children in Low Income Families (DWP)	Free School Meals (SBC)	Clothing Grant (SBC)	Educational Maintenance Allowance 16+ (SBC)
0 / 0: None	0 : None	0 : None	0: None
1: Under 10%	1 : Under 5%	1 : Under 5%	0.5: Under 5%
2 : 10% to Under 20%	2 : 5% to Under 10%	2 : 5% to Under 10%	1.0: 5% to Under 10%
3 : 20% to Under 30%	3 : 10% to Under 15%	3 : 10% to Under 15%	1.5: 10% to Under 15%
4 : 30% to Under 40%	4 : 15% to Under 20%	4 : 15% to Under 20%	2.0: 15% to Under 20%
5 : 40% or More	5 : 20% to Under 30%	5 : 20% to Under 30%	2.5: 20% to Under 30%
	6 30% or More	6 30% or More	3.0: 30% or More

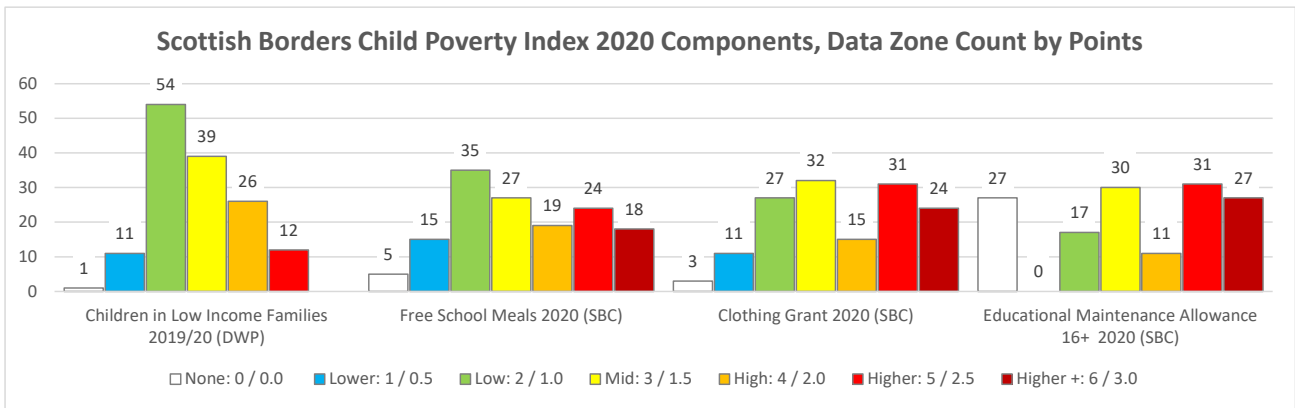
Note that the EMA scores are half the other components reflecting the population size.

A summary position for each primary school may be seen in: **Appendix 1: Scottish Borders Child Poverty Index (SB CPI) 2020: Primary School Ranking.**

The tables and graph below shows the allocation of data zones in the Scottish Borders for each of the components. It is interesting to note that for each component there are at least 1 data zones that does not have that specific component. However, every data zone in the Scottish Borders has some evidence of child poverty.

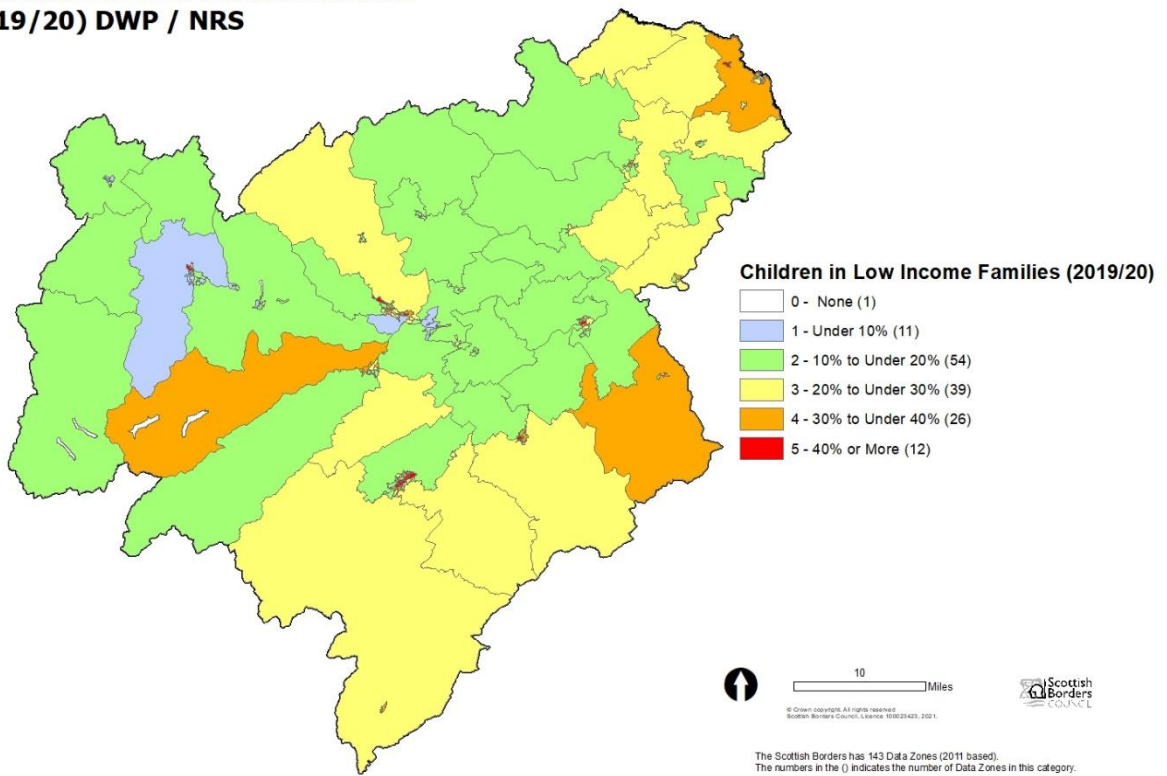
SB CPI Score for 2020 by Scottish Borders Data Zones - Count	Children in Low Income Families 2019/20 (DWP)	Free School Meals 2020 (SBC)	Clothing Grant 2020 (SBC)	Educational Maintenance Allowance 16+ 2020 (SBC)
None: 0 / 0.0	1	5	3	27
Lower: 1 / 0.5	11	15	11	0
Low: 2 / 1.0	54	35	27	17
Mid: 3 / 1.5	39	27	32	30
High: 4 / 2.0	26	19	15	11
Higher: 5 / 2.5	12	24	31	31
Higher +: 6 / 3.0		18	24	27
SBC Data Zones	143	143	143	143

SB CPI Score for 2020 by Scottish Borders Data Zones - Percent	Children in Low Income Families 2019/20 (DWP)	Free School Meals 2020 (SBC)	Clothing Grant 2020 (SBC)	Educational Maintenance Allowance 16+ 2020 (SBC)
None: 0 / 0.0	0.7%	3.5%	2.1%	18.9%
Lower: 1 / 0.5	7.7%	10.5%	7.7%	0.0%
Low: 2 / 1.0	37.8%	24.5%	18.9%	11.9%
Mid: 3 / 1.5	27.3%	18.9%	22.4%	21.0%
High: 4 / 2.0	18.2%	13.3%	10.5%	7.7%
Higher: 5 / 2.5	8.4%	16.8%	21.7%	21.7%
Higher +: 6 / 3.0		12.6%	16.8%	18.9%
SBC Data Zones	100.0%	100.0%	100.0%	100.0%

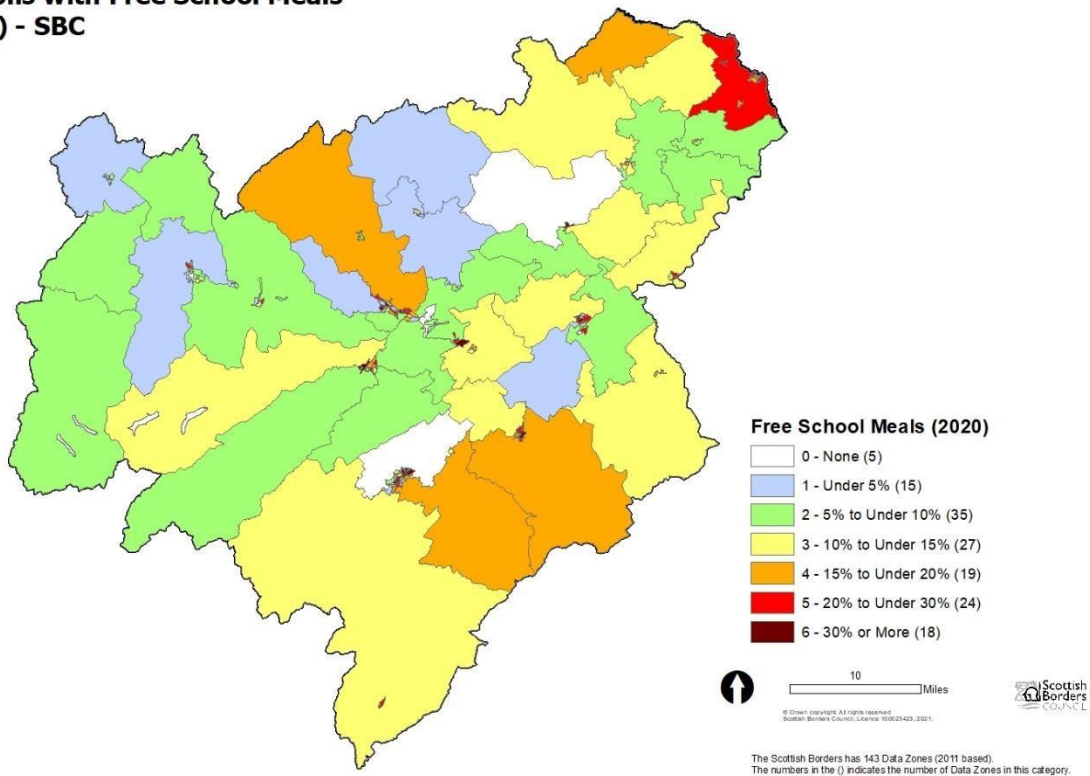


Below are the maps for each component, showing the results for each of the 143 data zones in the Scottish Borders.

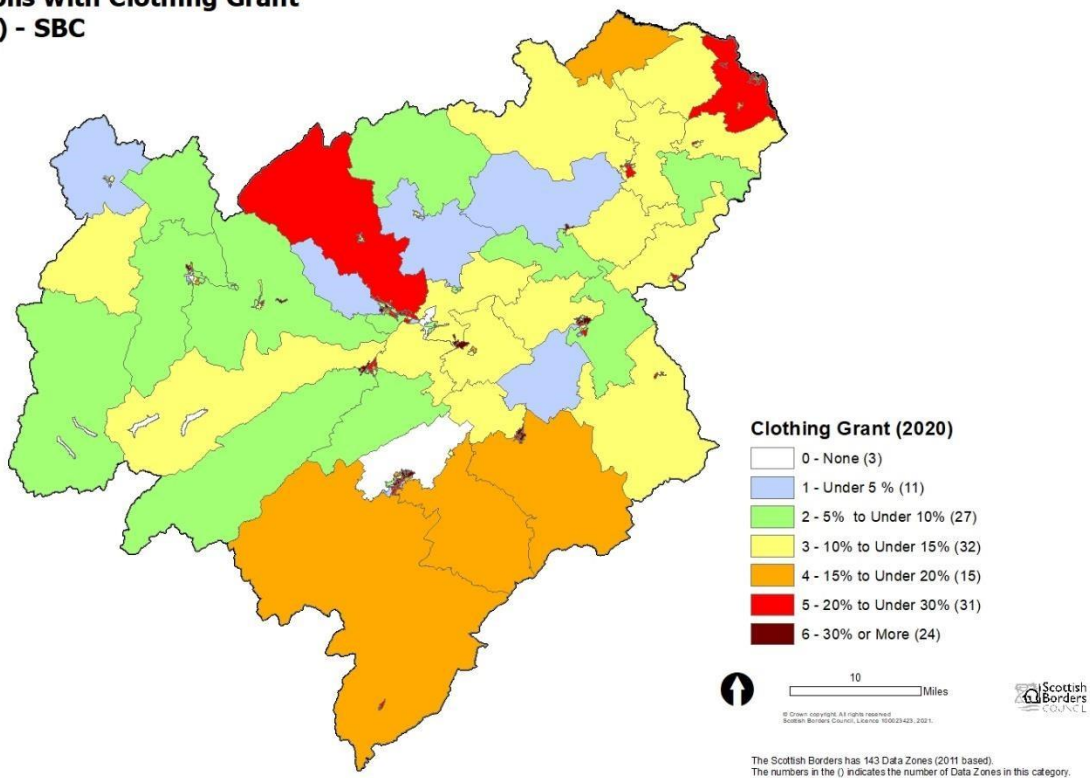
Scottish Borders Child Poverty Index 2020 % Children in Low Income Families (2019/20) DWP / NRS



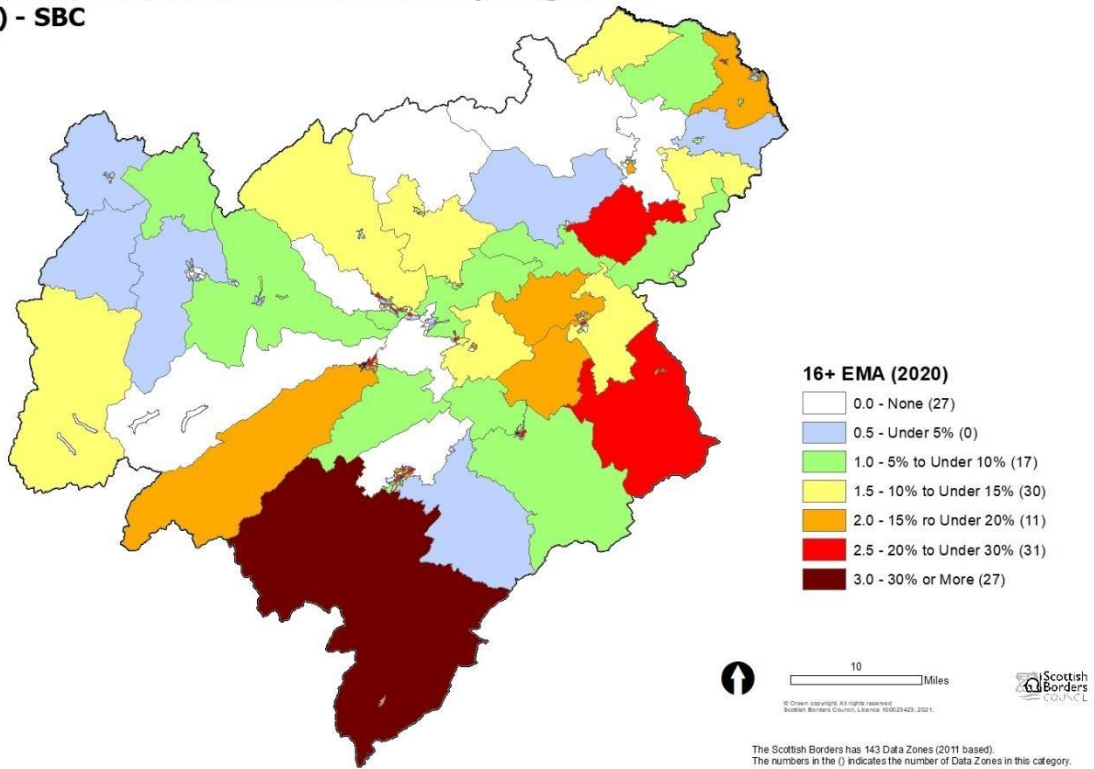
Scottish Borders Child Poverty Index 2020
% Pupils with Free School Meals
(2020) - SBC



Scottish Borders Child Poverty Index 2020
% Pupils with Clothing Grant
(2020) - SBC



Scottish Borders Child Poverty Index 2020
% Educational Maintenance Allowance Pupils Aged 16+
(2020) - SBC

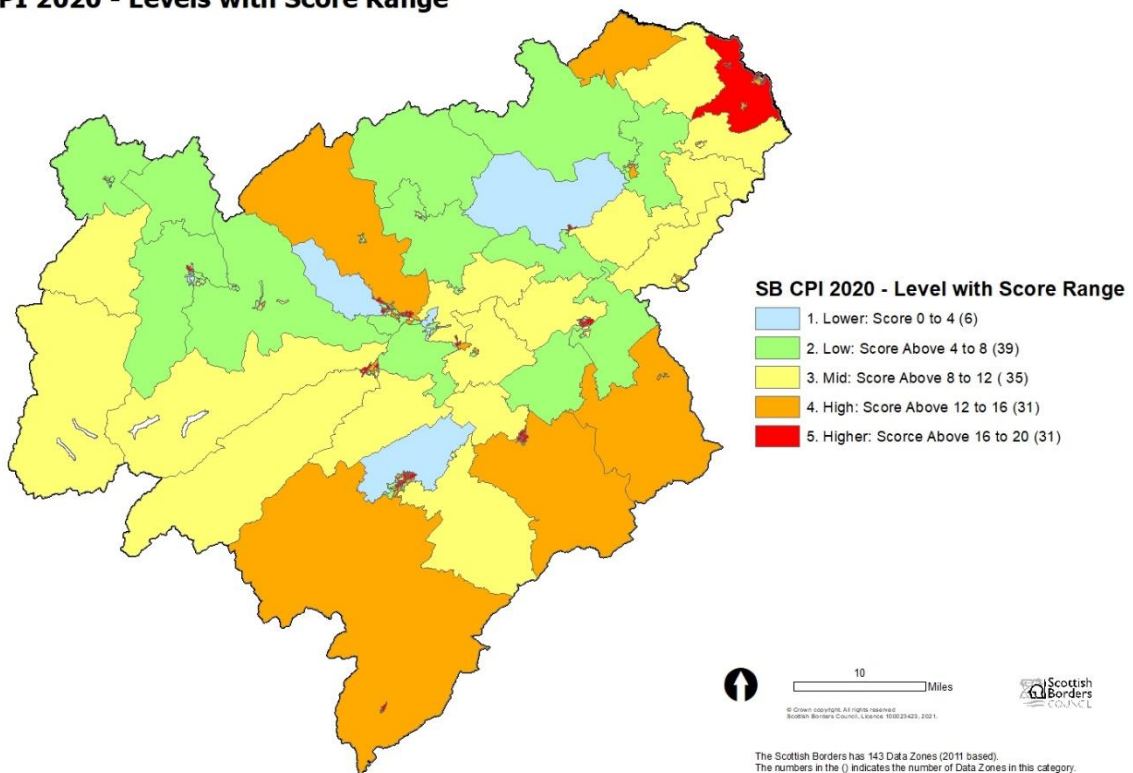


Scottish Borders Child Poverty Index 2020 Scores

The graph and map below shows the Scottish Borders data zones based on the SB CPI score, grouped into levels of Child Poverty. Higher level (32 data zones) have a score of above 16 to 20; High level (31 data zones) have a score of above 12 to 16; Mid level (35 data zones) have a score of above 8 to 12; Low level (39 data zones) have a score of above 4 to 8; and Lower level (6 data zones) have a score of 0 to 4. Every data zone in the Scottish Borders has some element of child poverty.

Appendix 2: Change in SB CPI Level by Locality lists the data zones within each locality along with its SIMD2020 decile and the SB CPI level for 2017, 2018, 2019 and 2020.

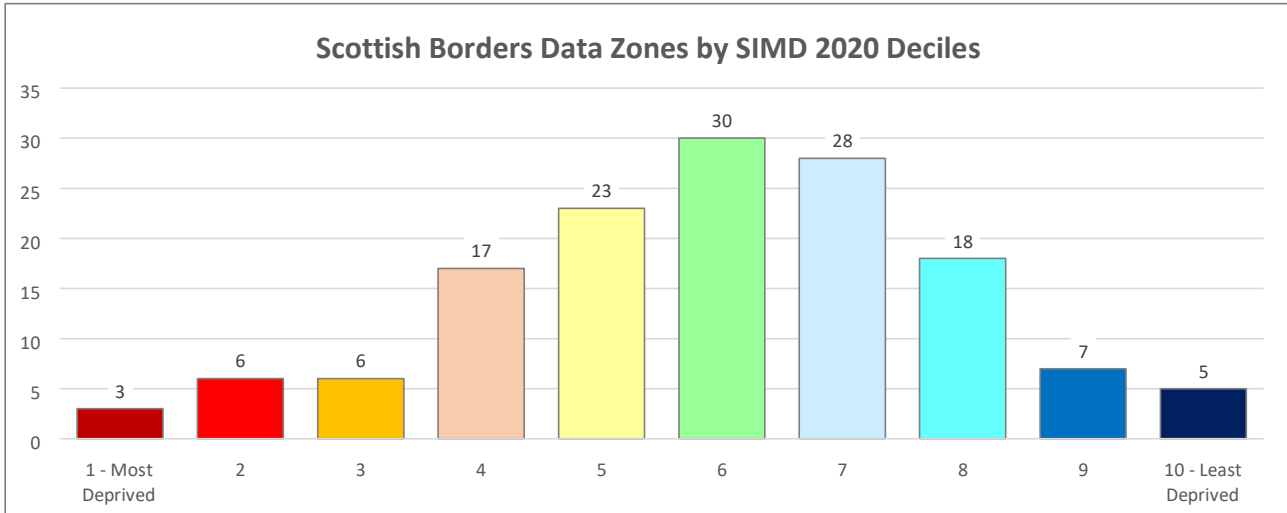
Scottish Borders Child Poverty Index 2020 SB CPI 2020 - Levels with Score Range



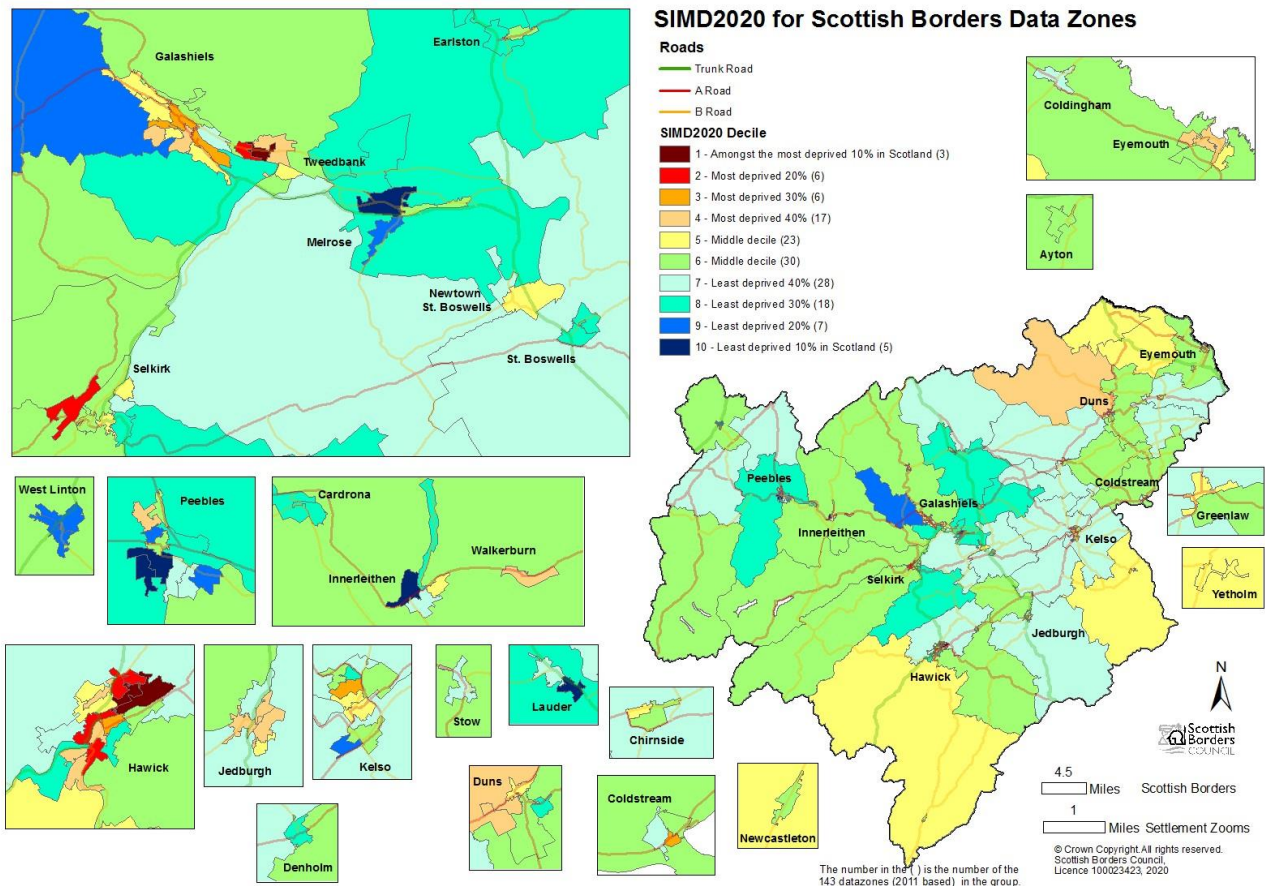
Comparing Scottish Borders Child Poverty Index 2020 to SIMD 2020

The Scottish Index of Multiple Deprivation (SIMD) is a good tool for identifying overall deprivation, however, it is not poverty specific or child focused. The SB CPI is a tactile index created to enable better insight in to child poverty within the Scottish Borders. This is a basic comparison between SIMD2020 Decile and SB CPI Score.

The graph below shows the count of the 143 data zones in the Scottish Borders by the SIMD 2020 Decile.

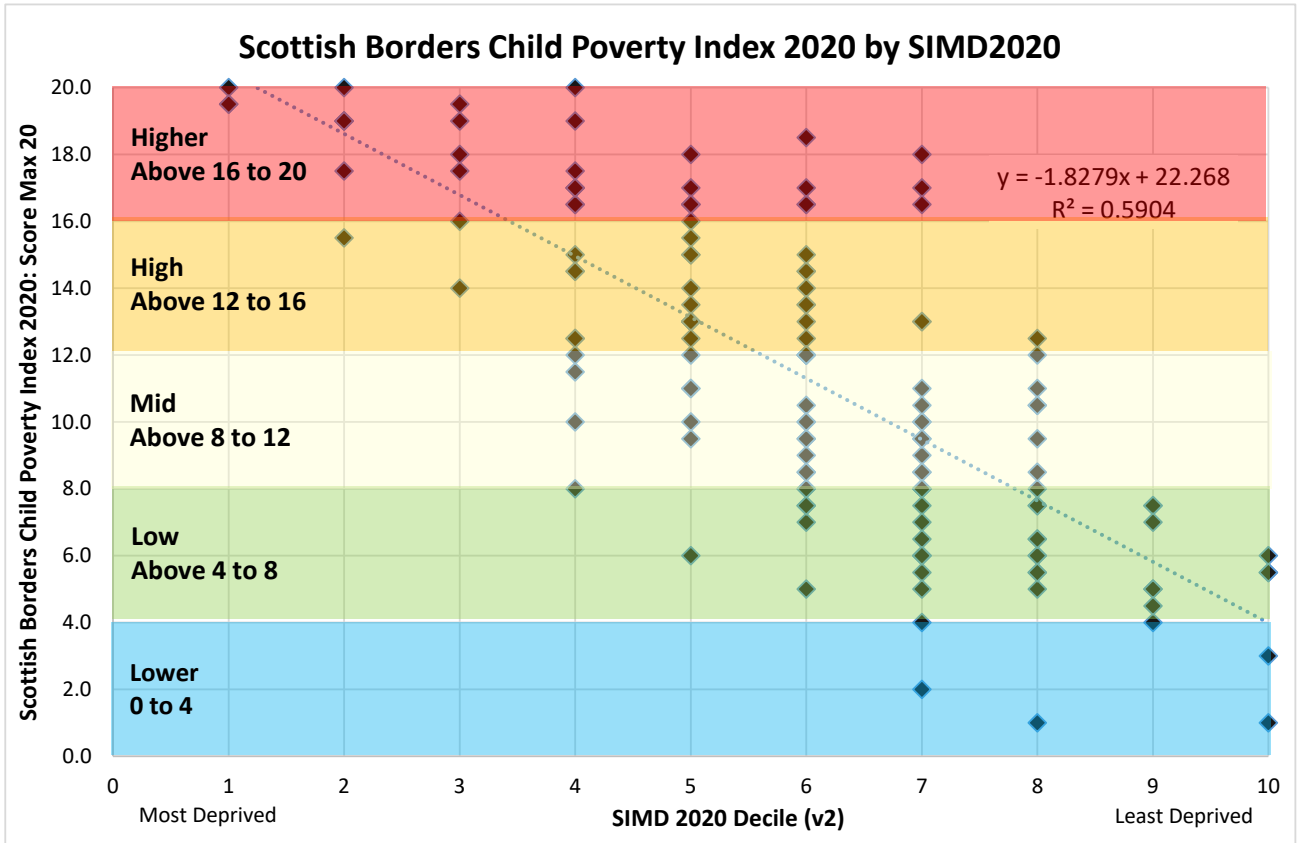


The map below shows the Scottish Borders data zones and the SIMD2020 decile.



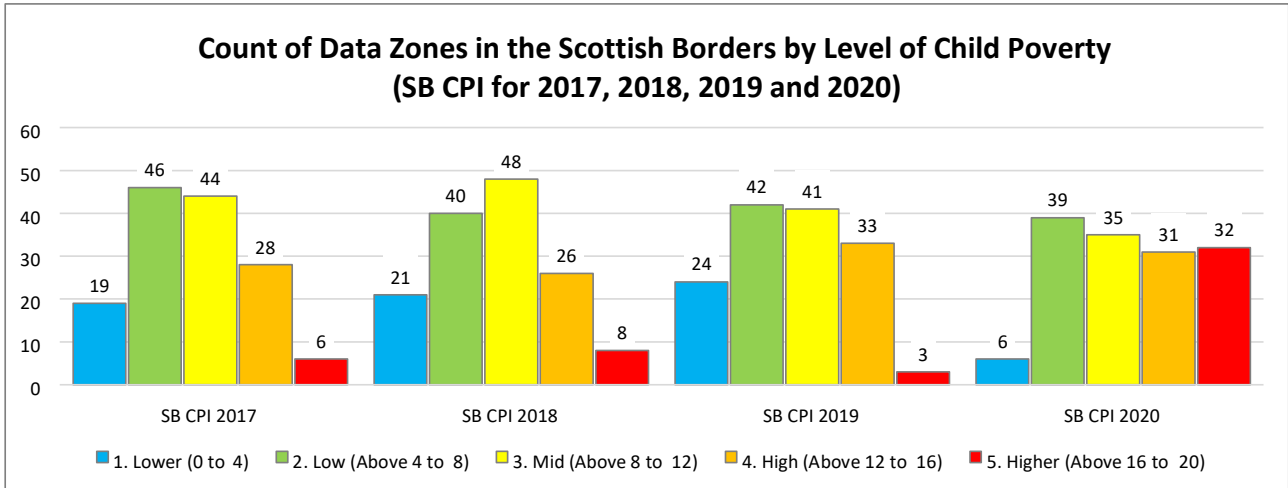
The graph below shows the 143 data zones in the Scottish Borders by SB CPI 2020 score and SIMD2020 decile. Although there is a clear relationship between deprivation and child poverty as represented by the data zones in the most deprived decile 1 and decile 2 also having a higher level of child poverty. However, there are several areas in the Scottish Borders where the level of child poverty is higher than expected when looking at SIMD decile. Again, it is important to remember that SIMD looks at the whole population and deprivation (not poverty only) and the SB CPI specifically focuses on children and poverty.

The graph below show that the data zones with the higher level of child poverty can have an SIMD2020 decile of 7.

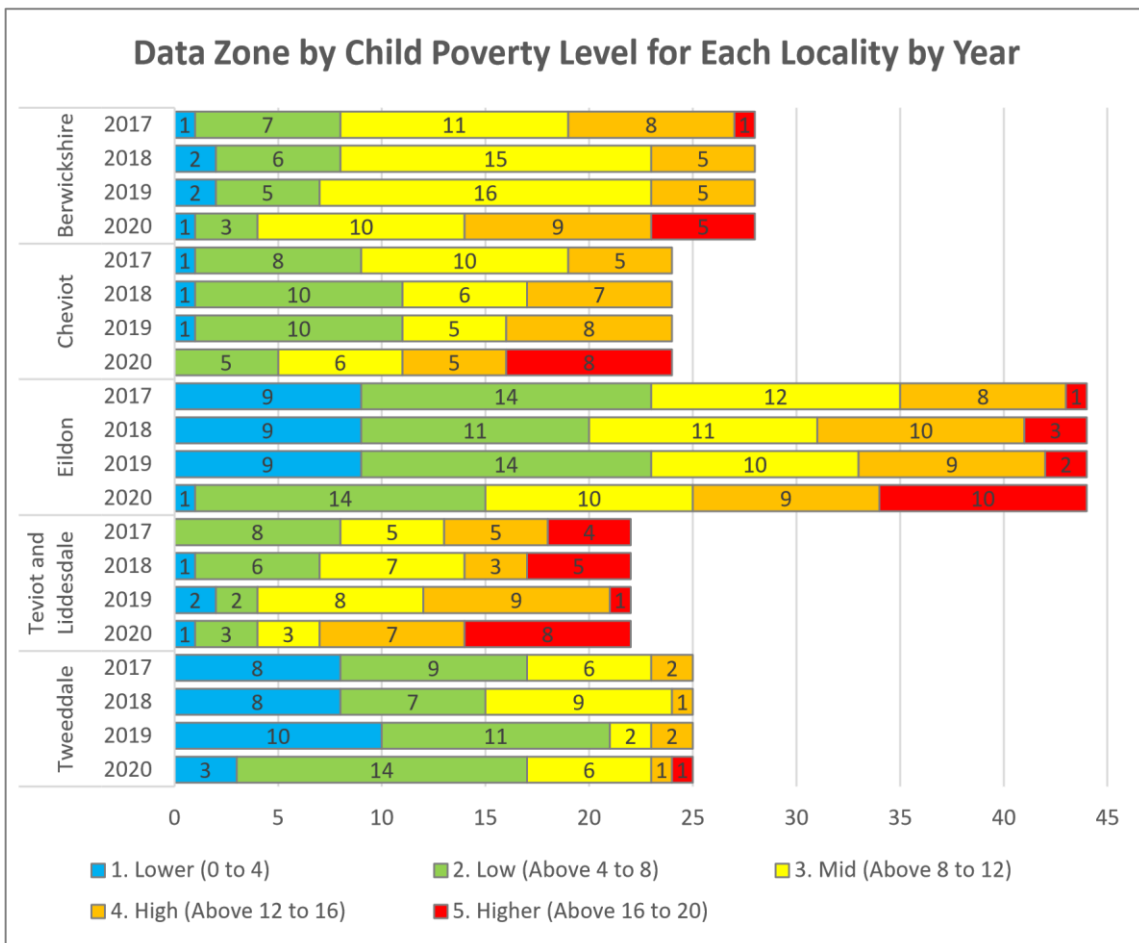


Scottish Borders Child Poverty Level Change Over Time and By Locality

The graph below shows the distribution of data zones by level of child poverty for 2017, 2018, 2019 and 2020. Between 2017 and 2019 the number of data zones in the 'high' and 'higher' level decreased. However, in the SB CPI 2020 the impact of Covid19 is evident, with 63 of the 143 (44%) data zones in the Scottish Borders having 'high' or 'higher' level of child poverty.



The graph below shows the distribution of data zones in each of the localities by level of child poverty for 2017, 2018, 2019 and 2020. Again between 2017 and 2019 the number of data zones with 'high' or 'higher' levels of child poverty decreased. However, in 2020 the impact of Covid19 can be seen in all areas of the Scottish Borders. In 2019 46% of the data zones had 'lower' or 'low' levels of child poverty that reduced to 31% in 2020.



Appendix 1: Scottish Borders Child Poverty Index 2020: Primary School Ranking

The table below ranks the non-denominational primary schools in the Scottish Borders by the 'Average of SB CPI Score' for the primary school based best fit data zones. The components of the SB CPI 2020 are:

- Percent of Children in Low Income Families (CiLIF) 2019/20 from DWP / NRS
- Percent of Pupils in Receipt of Free School Meals (FSM) 2020 from SBC's SEEMIS
- SEEMIS Percent of Pupils in Receipt of Clothing Grant (CG) 2020 from SBC's
- Percent of Pupils Aged 16+ in Receipt of Education Maintenance Allowance (EMA) 2020 from SBC's SEEMIS

Each primary school is allocated into a SB CPI level based on the school's score.

Scottish Borders	22.5%	15.7%	18.1%	16.0%	13.0	3. Mid	6	39	35	31	32	143
------------------	-------	-------	-------	-------	------	--------	---	----	----	----	----	-----

SB CPI 2020 Primary School Rank	Secondary School	Primary School	Average of % CiLIF 2019/20 (DWP)	Average of % FSM 2020 (SBC)	Average of % CLG 2020 (SBC)	Average of % EMA16+ 2020 (SBC)	School SB CPI 2020 Score (Max 20)	School SB CPI 2020 Level	SB CPI 2020 Level					Count of Data Zones
									Lower	Low	Mid	High	Higher	
1	Hawick High School	Burnfoot Primary	39.5%	44.5%	49.6%	31.5%	19.0	Higher					4	4
2	Eyemouth High School	Coldingham Primary	47.5%	20.4%	24.5%	40.0%	18.0	Higher					1	1
3	Galashiels Academy	Langlee Primary	33.7%	25.2%	30.4%	29.4%	17.5	Higher		1			3	4
4	Hawick High School	Newcastleton Primary	31.4%	23.2%	23.2%	33.3%	17.0	Higher					1	1
4	Jedburgh Grammar	Jedburgh Primary	31.3%	25.1%	28.5%	31.6%	17.0	Higher				2	4	6
4	Selkirk High School	Philiphough Primary	25.0%	25.6%	30.1%	39.6%	17.0	Higher		1			1	2
4	Berwickshire High School	Greenlaw Primary	21.0%	30.4%	30.4%	16.7%	17.0	Higher					1	1
8	Galashiels Academy	Burgh Primary	39.3%	22.1%	29.1%	24.6%	16.5	Higher			1		2	3

Scottish Borders

22.5%	15.7%	18.1%	16.0%	13.0	3. Mid	6	39	35	31	32	143
-------	-------	-------	-------	------	--------	---	----	----	----	----	-----

SB CPI 2020 Primary School Rank	Secondary School	Primary School	Average of % CiLIF 2019/20 (DWP)	Average of % FSM 2020 (SBC)	Average of % CLG 2020 (SBC)	Average of % EMA16+ 2020 (SBC)	School SB CPI 2020 Score (Max 20)	School SB CPI 2020 Level	SB CPI 2020 Level					Count of Data Zones
									Lower	Low	Mid	High	Higher	
9	Hawick High School	Trinity Primary	37.8%	18.3%	23.5%	63.3%	16.0	High				1	1	2
10	Eyemouth High School	Eyemouth Primary	31.0%	19.2%	22.6%	15.1%	15.0	High			1	2	2	5
10	Eyemouth High School	Ayton Primary	29.9%	21.4%	21.4%	19.9%	15.0	High				1	1	2
10	Earlston High School	Newtown Primary	20.2%	22.8%	24.5%	19.9%	15.0	High		1		1	1	3
10	Kelso High School	Yetholm Primary	12.7%	20.0%	28.0%	33.3%	15.0	High				1		1
14	Hawick High School	Drumlanrig St Cuthberts Primary	28.1%	18.6%	21.0%	23.2%	14.5	High		3		4	2	9
14	Galashiels Academy	Balmoral Primary	27.7%	22.4%	26.1%	13.7%	14.5	High		1		1	2	4
14	Kelso High School	Broomlands Primary	25.5%	19.2%	22.0%	23.4%	14.5	High		1	1		2	4
14	Kelso High School	Edenside Primary	25.0%	17.3%	20.0%	22.4%	14.5	High		1	2		2	5
14	Selkirk High School	Knowepark Primary	24.2%	18.3%	20.3%	27.4%	14.5	High			1	3	1	5
14	Galashiels Academy	Fountainhall Primary and Heriot Primary	20.7%	19.7%	22.2%	20.0%	14.5	High				1		1
20	Eyemouth High School	Cockburnspath Primary	29.2%	15.2%	15.2%	20.0%	13.5	High				1		1
21	Kelso High School	Morebattle Primary	32.2%	11.1%	13.3%	37.5%	13.0	High				1		1
21	Berwickshire High School	Coldstream Primary	24.8%	18.3%	21.3%	7.8%	13.0	High			2	2		4
23	Hawick High School	Wilton Primary	20.4%	12.8%	16.4%	23.8%	12.5	High			1	1		2

Scottish Borders

22.5% 15.7% 18.1% 16.0% 13.0 3. Mid 6 39 35 31 32 143

SB CPI 2020 Primary School Rank	Secondary School	Primary School	Average of % CILIF 2019/20 (DWP)	Average of % FSM 2020 (SBC)	Average of % CLG 2020 (SBC)	Average of % EMA16+ 2020 (SBC)	School SB CPI 2020 Score (Max 20)	School SB CPI 2020 Level	SB CPI 2020 Level					Count of Data Zones
									Lower	Low	Mid	High	Higher	
24	Galashiels Academy	St Peters Primary	18.9%	15.1%	18.5%	19.9%	12.0	Mid		1		2		3
25	Berwickshire High School	Duns Primary	23.8%	12.2%	15.4%	11.7%	11.5	Mid		2	2	2		6
25	Peebles High School	Walkerburn Primary	18.8%	7.6%	30.3%	12.5%	11.5	Mid			1			1
27	Berwickshire High School	Chirnside Primary	25.2%	12.9%	15.6%	6.8%	11.0	Mid			2	1		3
27	Eyemouth High School	Reston Primary	24.0%	11.3%	11.3%	15.4%	11.0	Mid			1			1
27	Berwickshire High School	Swinton Primary	20.4%	9.1%	10.3%	30.0%	11.0	Mid			2			2
27	Kelso High School	Ednam Primary	19.5%	11.9%	14.9%	31.6%	11.0	Mid			1			1
27	Earlston High School	St Boswells Primary	16.2%	14.9%	15.3%	15.5%	11.0	Mid		1	1	1		3
32	Selkirk High School	Yarrow Primary	33.3%	14.0%	14.0%	0.0%	10.0	Mid			1			1
32	Hawick High School	Denholm Primary	29.3%	14.7%	14.7%	8.0%	10.0	Mid			2			2
32	Selkirk High School	Kirkhope Primary	20.0%	6.5%	9.7%	33.3%	10.0	Mid			1			1
32	Peebles High School	Kingsland Primary	18.4%	11.7%	15.3%	5.5%	10.0	Mid		4	1		1	6
36	Galashiels Academy	Tweedbank Primary	19.3%	9.9%	12.9%	21.0%	9.5	Mid		1	1	1		3
37	Selkirk High School	Lilliesleaf Primary	22.6%	8.8%	9.6%	12.5%	8.5	Mid			1			1
37	Hawick High School	Stirches Primary	20.6%	5.7%	8.6%	13.3%	8.5	Mid	1			1		2
37	Peebles High School	Newlands Primary	15.2%	9.2%	11.8%	10.0%	8.5	Mid			1			1
37	Peebles High School	Broughton Primary	14.7%	9.0%	9.0%	20.0%	8.5	Mid			1			1
37	Peebles High School	St Ronans Primary	12.6%	9.8%	12.7%	11.5%	8.5	Mid		3	1	1		5
42	Galashiels Academy	Glendinning Primary	19.9%	10.3%	12.0%	0.0%	8.0	Low		1				1
42	Earlston High School	Earlston Primary	19.5%	7.6%	9.6%	16.8%	8.0	Low		1	2			3
42	Jedburgh Grammar	Ancrum Primary	15.1%	7.3%	7.8%	18.8%	8.0	Low		1	1			2
42	Earlston High School	Lauder Primary	14.1%	6.5%	6.8%	17.6%	8.0	Low		2	1			3
42	Kelso High School	Sprouston Primary	12.8%	5.4%	5.4%	18.8%	8.0	Low		1				1
42	Peebles High School	Eddleston Primary	11.3%	8.2%	8.2%	15.4%	8.0	Low		1				1
48	Earlston High School	Gordon Primary	15.9%	5.1%	5.1%	11.1%	7.5	Low		1				1
49	Earlston High School	Melrose Primary	12.6%	6.8%	6.9%	3.5%	6.5	Low	1	2	1			4
49	Peebles High School	Priorsford Primary	10.5%	6.5%	7.5%	2.2%	6.5	Low	2	3	1			6
51	Galashiels Academy	Stow Primary	13.4%	6.4%	6.4%	0.0%	6.0	Low		1				1
51	Peebles High School	West Linton Primary	8.9%	5.8%	6.3%	6.5%	6.0	Low		3				3
53	Earlston High School	Channelkirk Primary	19.8%	3.9%	5.3%	0.0%	5.0	Low		1				1
54	Earlston High School	Westruther Primary	13.8%	0.0%	0.7%	9.5%	4.5	Low	1					1
55	Galashiels Academy	Clovenfords Primary	13.1%	3.3%	3.3%	0.0%	4.0	Low	1					1

Appendix 2: Change in SB CPI Level by Locality

Berwickshire

SETTLEMENT (Best Fit)	Data Zone 2011 Code and Name	SIMD2020 Decile v2	SB CPI 2017 Level	SB CPI 2018 Level	SB CPI 2019 Level	SB CPI 2020 Level
Ayton	S01012309: Ayton	6	2. Low	3. Mid	3. Mid	4. High
Chirnside	S01012320: Chirnside - West	5	4. High	4. High	4. High	4. High
	S01012321: Chirnside - East	6	3. Mid	3. Mid	3. Mid	3. Mid
Coldingham	S01012311: Coldingham	7	5. Higher	4. High	3. Mid	5. Higher
Coldstream	S01012325: Coldstream - West	7	2. Low	2. Low	3. Mid	3. Mid
	S01012326: Coldstream - South	3	4. High	4. High	3. Mid	4. High
	S01012327: Coldstream - East	6	4. High	3. Mid	3. Mid	4. High
Duns	S01012305: Duns - South	6	2. Low	2. Low	3. Mid	4. High
	S01012306: Duns - West	4	4. High	3. Mid	3. Mid	4. High
	S01012307: Duns - North	5	3. Mid	3. Mid	3. Mid	3. Mid
	S01012308: Duns - East	8	3. Mid	3. Mid	2. Low	3. Mid
Eyemouth	S01012314: Eyemouth - Gunsgreen	5	4. High	3. Mid	4. High	5. Higher
	S01012315: Eyemouth - Seafront Harbour	4	2. Low	1. Lower	3. Mid	3. Mid
	S01012316: Eyemouth - Central	4	3. Mid	3. Mid	4. High	4. High
	S01012317: Eyemouth - South	6	3. Mid	3. Mid	3. Mid	4. High
	S01012318: Eyemouth - North	4	4. High	4. High	4. High	5. Higher
Greenlaw	S01012300: Greenlaw	5	4. High	4. High	4. High	5. Higher
Rural - Berwickshire	S01012301: Swinton Leithholm and Fogo Area	6	2. Low	2. Low	2. Low	3. Mid
	S01012302: Cranshaws - Abbey St Bathans Area	4	3. Mid	3. Mid	2. Low	2. Low
	S01012303: Westruther and Polwarth Area	7	1. Lower	1. Lower	1. Lower	1. Lower
	S01012304: Gordon and Hume Area	7	2. Low	2. Low	2. Low	2. Low
	S01012310: St Abbs and Eyemouth Landward	6	3. Mid	2. Low	3. Mid	5. Higher
	S01012312: Reston and Coldingham Moor Area	5	4. High	3. Mid	3. Mid	3. Mid
	S01012313: Cockburnspath and Area	5	2. Low	3. Mid	2. Low	4. High
	S01012319: Preston and Manderston Area	6	3. Mid	3. Mid	3. Mid	2. Low
	S01012322: Whitsome Allanton and Hutton Area	7	3. Mid	2. Low	1. Lower	3. Mid
	S01012323: Foulden and Area	7	3. Mid	3. Mid	3. Mid	3. Mid
	S01012324: Birgham and Ladykirk Area	6	3. Mid	3. Mid	3. Mid	3. Mid

Cheviot

SETTLEMENT (Best Fit)	Data Zone 2011 Code and Name	SIMD2020 Decile v2	SB CPI 2017 Level	SB CPI 2018 Level	SB CPI 2019 Level	SB CPI 2020 Level
Jedburgh	S01012349: Jedburgh - Howden	5	4. High	3. Mid	4. High	4. High
	S01012350: Jedburgh - Doom Hill	4	4. High	4. High	4. High	5. Higher
	S01012351: Jedburgh - East Central	4	3. Mid	3. Mid	4. High	5. Higher
	S01012352: Jedburgh - West Central	7	2. Low	3. Mid	4. High	5. Higher
	S01012353: Jedburgh - Abbey	4	3. Mid	4. High	3. Mid	5. Higher
Kelso	S01012330: Kelso S - Pinnaclehill	6	3. Mid	4. High	4. High	3. Mid
	S01012331: Kelso S - Maxwellheugh	9	1. Lower	1. Lower	1. Lower	2. Low
	S01012334: Kelso N - High Croft Orchard Park	6	4. High	4. High	4. High	5. Higher
	S01012335: Kelso N - Hendersyde Oakfield	7	3. Mid	2. Low	3. Mid	2. Low
	S01012336: Kelso N - Abbotseat	8	3. Mid	3. Mid	2. Low	3. Mid
	S01012337: Kelso N - Poynder Park	3	3. Mid	4. High	4. High	5. Higher
	S01012338: Kelso S - Bowmont and Edenside	5	3. Mid	3. Mid	3. Mid	5. Higher
	S01012339: Kelso S - Abbey	5	2. Low	2. Low	2. Low	3. Mid
S01012340: Kelso S - Broomlands	6	4. High	4. High	4. High	5. Higher	
Rural - Cheviot	S01012329: Morebattle Hownam and Area	5	3. Mid	2. Low	2. Low	4. High
	S01012332: Smailholm Stitchill and Ednam Area	7	3. Mid	3. Mid	2. Low	3. Mid
	S01012333: Sprouston and Area	7	2. Low	2. Low	2. Low	2. Low
	S01012341: Oxnam and Camptown Area	7	2. Low	2. Low	2. Low	4. High
	S01012342: Ancrum and Lanton Area	6	2. Low	2. Low	2. Low	3. Mid
	S01012343: Roxburgh Heiton Eckford Area	7	2. Low	2. Low	2. Low	2. Low
	S01012346: Dryburgh Charlesfield Maxton Area	7	3. Mid	2. Low	2. Low	3. Mid
St Boswells	S01012347: St Boswells - East	8	2. Low	2. Low	3. Mid	4. High
	S01012348: St Boswells - West	8	2. Low	2. Low	2. Low	2. Low
Yetholm	S01012328: Town Yetholm	5	4. High	4. High	3. Mid	4. High

Eildon

SETTLEMENT (Best Fit)	Data Zone 2011 Code and Name	SIMD2020 Decile v2	SB CPI 2017 Level	SB CPI 2018 Level	SB CPI 2019 Level	SB CPI 2020 Level
Darnick and Gattonside	S01012289: Gattonside - Darnick - Chiefswood	8	2. Low	1. Lower	1. Lower	1. Lower
Earlston	S01012269: Earlston - West	8	1. Lower	2. Low	2. Low	2. Low
	S01012270: Earlston - East	6	2. Low	3. Mid	2. Low	3. Mid
	S01012274: Galashiels - N - Halliburton	6	2. Low	2. Low	2. Low	2. Low
Galashiels	S01012275: Galashiels - N - Town Centre	3	3. Mid	4. High	4. High	5. Higher
	S01012276: Galashiels - N - Windyknowe	5	1. Lower	2. Low	2. Low	2. Low
	S01012277: Galashiels - N - Wood St	5	4. High	4. High	4. High	5. Higher
	S01012278: Galashiels - W - Old Town	4	4. High	4. High	3. Mid	3. Mid
	S01012279: Galashiels - W - Thistle St	3	5. Higher	4. High	4. High	5. Higher
	S01012280: Galashiels - W - Balmoral Rd	4	3. Mid	4. High	4. High	5. Higher
	S01012281: Galashiels - W - Balmoral Pl	5	3. Mid	4. High	3. Mid	4. High
	S01012282: Galashiels - S - Netherdale	8	1. Lower	1. Lower	2. Low	2. Low
	S01012283: Galashiels - S - St Peters Sch	5	4. High	4. High	3. Mid	4. High
	S01012284: Galashiels - S - Huddersfield	3	4. High	4. High	4. High	4. High
	S01012285: Galashiels - S - Glenfield	7	2. Low	1. Lower	2. Low	2. Low
	S01012286: Gala - Langlee - East	4	3. Mid	3. Mid	3. Mid	5. Higher
	S01012287: Gala - Langlee - Central	1	4. High	5. Higher	5. Higher	5. Higher
	S01012288: Gala - Langlee - West	2	4. High	5. Higher	5. Higher	5. Higher
	Lauder	S01012296: Lauder - South	10	2. Low	1. Lower	1. Lower
S01012298: Lauder - North		7	3. Mid	3. Mid	1. Lower	3. Mid
Melrose and Newstead	S01012290: Melrose - Newstead	6	3. Mid	2. Low	2. Low	3. Mid
	S01012291: Melrose - Dingleton Hill	9	2. Low	2. Low	1. Lower	2. Low
	S01012292: Melrose - High Street	10	1. Lower	1. Lower	2. Low	2. Low
Newtown St Boswells	S01012344: Newtown St Boswells - South	5	3. Mid	4. High	3. Mid	4. High
	S01012345: Newtown St Boswells - North	7	2. Low	3. Mid	3. Mid	5. Higher
Rural - Eildon	S01012268: Earlston and Melrose Landward	8	2. Low	2. Low	2. Low	3. Mid
	S01012271: Heriot - Fountainhall - Stow Landward	6	2. Low	3. Mid	3. Mid	4. High
	S01012297: Blainslie and Legerwood	8	1. Lower	1. Lower	1. Lower	2. Low
	S01012299: Oxtou and Area	7	1. Lower	1. Lower	1. Lower	2. Low
	S01012376: Ashkirk Lilliesleaf and Midlem Area	8	2. Low	2. Low	2. Low	3. Mid
	S01012377: Bowden and Lindean Area	7	1. Lower	1. Lower	1. Lower	2. Low
	S01012378: Etrick Water and Bowhill Area	6	2. Low	2. Low	2. Low	3. Mid
	S01012379: Yarrow Water and Sunderland Area	6	1. Lower	3. Mid	2. Low	3. Mid
Selkirk	S01012380: Selkirk - Shawburn	5	3. Mid	3. Mid	4. High	5. Higher
	S01012381: Selkirk - Town Centre	5	2. Low	3. Mid	4. High	4. High
	S01012382: Selkirk - Hillside Terrace	8	2. Low	2. Low	2. Low	3. Mid
	S01012383: Selkirk - Shawpark	7	3. Mid	4. High	3. Mid	4. High
	S01012384: Selkirk - Dunsdale	6	3. Mid	3. Mid	4. High	4. High
	S01012385: Selkirk - Heatherlie	6	3. Mid	3. Mid	3. Mid	2. Low
Stow	S01012386: Selkirk - Bannerfield	2	4. High	5. Higher	4. High	5. Higher
	S01012272: Stow	7	1. Lower	1. Lower	1. Lower	2. Low
Tweedbank	S01012293: Tweedbank - West	6	2. Low	2. Low	2. Low	4. High
	S01012294: Tweedbank - North	5	4. High	3. Mid	3. Mid	3. Mid
	S01012295: Tweedbank - East	7	3. Mid	2. Low	1. Lower	2. Low

Teviot and Liddesdale

SETTLEMENT (Best Fit)	Data Zone 2011 Code and Name	SIMD2020 Decile v2	SB CPI 2017 Level	SB CPI 2018 Level	SB CPI 2019 Level	SB CPI 2020 Level
Denholm	S01012356: Denholm	8	2. Low	2. Low	2. Low	3. Mid
Hawick	S01012359: Hawick - Burnfoot - South East	1	5. Higher	5. Higher	4. High	5. Higher
	S01012360: Hawick - Burnfoot - Central	1	5. Higher	4. High	4. High	5. Higher
	S01012361: Hawick - Burnfoot - West	2	4. High	5. Higher	4. High	5. Higher
	S01012362: Hawick - Burnfoot - North	2	5. Higher	5. Higher	5. Higher	5. Higher
	S01012363: Hawick Central - Wellogate	2	3. Mid	3. Mid	4. High	4. High
	S01012364: Hawick Central - Trinity	3	4. High	3. Mid	4. High	5. Higher
	S01012365: Hawick Central - Millers Knowes	8	2. Low	1. Lower	1. Lower	2. Low
	S01012366: Hawick Central - Town Centre	4	5. Higher	5. Higher	4. High	5. Higher
	S01012367: Hawick Central - Weensland	6	4. High	4. High	4. High	4. High
	S01012368: Hawick West End - Wilton Dean	7	2. Low	2. Low	3. Mid	2. Low
	S01012369: Hawick West End - Crumhaughill and Parkdale	8	2. Low	2. Low	2. Low	2. Low
	S01012370: Hawick Central - Drumlanrig	4	3. Mid	2. Low	3. Mid	4. High
	S01012371: Hawick West End - Crumhaugh	4	3. Mid	3. Mid	4. High	4. High
	S01012372: Hawick North - Commercial Road	2	4. High	5. Higher	4. High	5. Higher
	S01012373: Hawick North - Wilton Hill	5	3. Mid	3. Mid	3. Mid	3. Mid
	S01012374: Hawick North - Stirtches	5	2. Low	2. Low	3. Mid	4. High
S01012375: Hawick North - Silverbuthall	4	4. High	3. Mid	3. Mid	4. High	
Newcastleton	S01012354: Newcastleton	6	2. Low	4. High	3. Mid	5. Higher
Rural - Teviot and Liddesdale	S01012355: Teviothead and Hermitage Area	5	3. Mid	3. Mid	3. Mid	4. High
	S01012357: Minto Cauldmill and Boonraw Area	7	2. Low	3. Mid	1. Lower	1. Lower
	S01012358: Bonchester Bridge and Chesters Area	6	2. Low	2. Low	3. Mid	3. Mid

Tweeddale

SETTLEMENT (Best Fit)	Data Zone 2011 Code and Name	SIMD2020 Decile v2	SB CPI 2017 Level	SB CPI 2018 Level	SB CPI 2019 Level	SB CPI 2020 Level
Cardrona	S01012261: Cardrona	8	1. Lower	2. Low	2. Low	2. Low
Innerleithen	S01012264: Innerleithen - North	8	1. Lower	1. Lower	1. Lower	2. Low
	S01012265: Innerleithen - East	5	3. Mid	3. Mid	4. High	4. High
	S01012266: Innerleithen - South	7	3. Mid	3. Mid	2. Low	3. Mid
	S01012267: Innerleithen - West	10	1. Lower	1. Lower	1. Lower	2. Low
Peebles	S01012251: Peebles - N - Connor St	4	4. High	4. High	4. High	5. Higher
	S01012252: Peebles North - Dalatho	6	2. Low	3. Mid	2. Low	3. Mid
	S01012253: Peebles - N - Cuddyside	6	2. Low	3. Mid	2. Low	2. Low
	S01012254: Peebles - N - March St	9	2. Low	3. Mid	2. Low	2. Low
	S01012255: Peebles - N - Eastgate	8	2. Low	2. Low	1. Lower	2. Low
	S01012256: Peebles - S - Calvalry Park	9	2. Low	1. Lower	2. Low	2. Low
	S01012257: Peebles - S - Gallow Hill	7	3. Mid	3. Mid	2. Low	3. Mid
	S01012258: Peebles - S - Edderston Rd	10	1. Lower	1. Lower	1. Lower	1. Lower
	S01012259: Peebles - S - Caledonian-Springhill	10	1. Lower	1. Lower	1. Lower	1. Lower
	S01012260: Peebles - S - Victoria Park	7	3. Mid	2. Low	2. Low	2. Low
Rural - Tweeddale	S01012244: Carlops Romannobridge	6	1. Lower	1. Lower	1. Lower	2. Low
	S01012247: Eddleston and Area	7	2. Low	1. Lower	1. Lower	2. Low
	S01012248: Stobo - Blyth Bridge - Skirling	7	3. Mid	3. Mid	2. Low	3. Mid
	S01012249: Broughton and Upper Tweed	6	3. Mid	3. Mid	3. Mid	3. Mid
	S01012250: Glentress and Manor Valley	8	2. Low	2. Low	1. Lower	2. Low
	S01012262: Tweeddale East Landward	6	2. Low	2. Low	2. Low	2. Low
	S01012273: Clovenfords and Area	9	2. Low	2. Low	1. Lower	1. Lower
Walkerburn	S01012263: Walkerburn	4	4. High	3. Mid	3. Mid	3. Mid
West Linton	S01012245: West Linton - Lower	9	1. Lower	1. Lower	1. Lower	2. Low
	S01012246: West Linton - Upper	9	1. Lower	2. Low	2. Low	2. Low